

## MANAGEMENT OF KCPA

KCPA is managed by a duly elected committee of professional counsellors on behalf of the members of the association

## ADMINISTRATIVE STAFF

The Association has a staff which oversees the daily running of the office activities from 8.30am to 5pm Mondays to Fridays and 9am to 1pm on Saturdays except on National public holidays

## STANDARDS, ETHICS AND ACCREDITATION COMMITTEE (SEAC)

The committee meets regularly to process membership and carry out tasks related to professional ethics and practice

## REGIONAL OFFICES

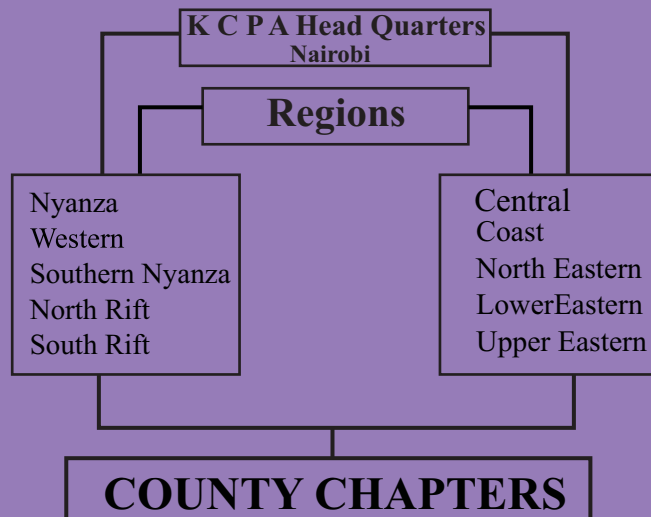
These are offices in the different regions of Kenya, managed by a regional coordinator to liaise with the national office to respond to the psychosocial needs of members of their communities

The management strictly adheres to the KCPA Code Of Ethics And The KCPA Policy Document

## CHEQUES AND MONEY ORDERS ARE PAYABLE TO:

**Kenya Counseling & Psychological Association**  
**Cooperative Bank 01134308358300 Aga Khan Walk**  
**Or Lipa na Mpesa TILL NO: 326109 GO TO**  
**BUYGOODS & SERVICES**

## ORGANIZATIONAL STRUCTURE



**For more information contact**  
**Kenya Counseling and Psychological Association**  
**KTDA PLAZA 6TH FLOOR**  
**P.O. BOX 41132 – 00100,NAIROBI**  
**TEL: 0726068933 OR 0724092933**  
**EMAIL: kenyacounselling2006@yahoo.com**  
**Website:www.kenyacounsellingassociation.org**



## KENYA COUNSELLING AND PSYCHOLOGICAL ASSOCIATION (KCPA)

### VISION

To be a world class umbrella – body for counsellors and Psychologists in Kenya.

### MISSION

To ensure professionalism in Psychological Counselling through upholding standards in training, research, practice and advocacy

*A Profesional Body For Counsellors & PSychologists In Kenya*

## WHO WE ARE

Kenya Counseling and Psychological Association (KCPA) is **the umbrella professional Association** for Counsellors and Psychologists in Kenya with a membership of about 4000 counsellors and psychologists spread across the entire nation of Kenya.

It was formed in 1988 and registered officially in 1990 as the Kenya Counseling Association (KCA) Counseling and Psychology is a confidential professional working relationship in which a counsellor or a psychologist gets into a mutual formal agreement to support a client to resolve, manage or cope with issues of life

### ETHICAL PRINCIPLES

1. Respect for clients
2. Commitment to clients wellness
3. Avoidance of all forms of exploitation or abuse
4. Justice
5. Honoring the trust placed on the practitioner
6. Competence

## OUR CORE VALUES

- Professionalism
- Confidentiality
- Integrity
- Commitment

### MAIN OBJECTIVES OF KCPA

1. To regulate the training, practice and supervision of counselling and psychology in Kenya
2. To create awareness of professional counselling and psychological services
3. To establish and regulate an accreditation system for counselling and psychology practitioners
4. To provide linkages with other national and international professional associations
5. To promote research in psychology to enhance professional development .

KCPA membership is open to individuals, national and international organizations

Annual Subscription varies with status.

## ORGANIZATION MEMBERSHIP

- i) Be duly registered by the government of Kenya
- ii) Be engaged in the promotion, training and practice of psychological counselling
- iii) Have a minimum staff of professional and practicing counsellors accredited by KCPA
- iv) submit a duly filled official application form from KCPA and payments  
Registration fee: ksh.10,000/=  
Annual Subscription: Ksh.5,000/=

### INDIVIDUAL MEMBERSHIP NEW APPLICANTS:

A duly filled application form from KCPA and a non-refundable registration fee of Ksh. 4000/= KCPA then has 7 statuses a registered counsellor would attain depending on level of training, years of practice, client log hours and therapy /supervision hours

### STATUS

1. STUDENTS STATUS
2. ASSOCIATE STATUS
3. ACCREDITED STATUS
4. SENIOR STATUS
5. ASSOCIATE SUPERVISOR
6. ACCREDITED SUPERVISOR
7. SENIOR SUPERVISOR